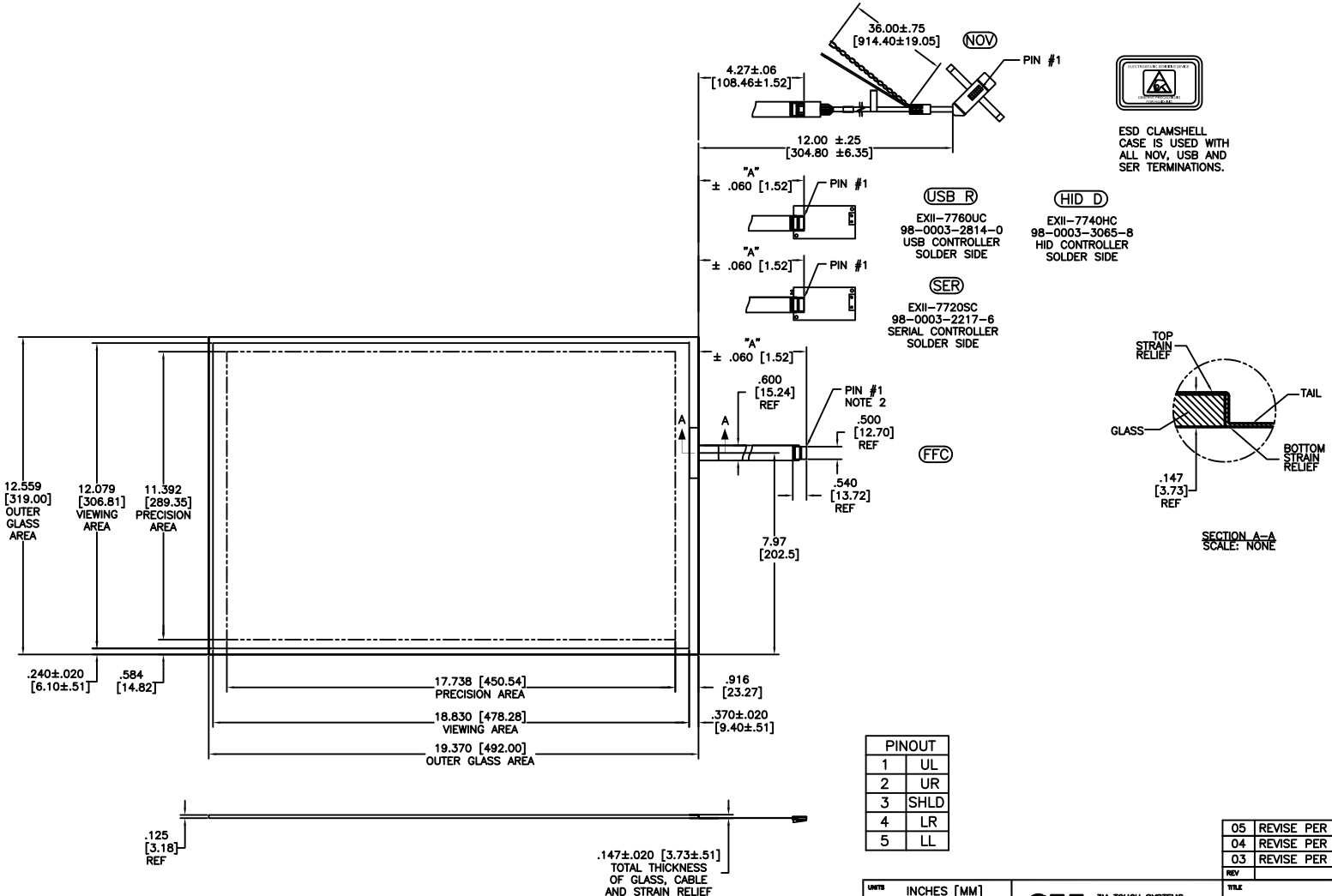


OGA DIAGONAL: 23.09 [586.4]
 VA DIAGONAL: 22.37 [568.2]
 PA DIAGONAL: 21.08 [535.5]

TOP LEVEL NUMBER	SKU 98 NUMBER	TYPE	DIM "A" (TOTAL GLASS TO CONNECTOR)	A/G FINISH	PROD SPEC
17-9311-205	98-0003-2209-3	FFC	8.00" [203.20]	AG500	23655
17-9311-206	98-0003-2731-6	NOV	SEE DWG	AG500	23655
17-9311-227	98-0003-2734-0	SER	8.00" [203.20]	AG500	23655
17-9311-226	98-0003-3052-6	USB R	8.00" [203.20]	AG500	23655
N/A	98-0003-3652-3	HID D	8.00" [203.20]	AG500	23655
N/A	98-0003-3420-5	FFC	8.00" [203.20]	WC100	34523
N/A	98-0003-3418-9	SER	8.00" [203.20]	WC100	34523
N/A	98-0003-3419-7	USB R	8.00" [203.20]	WC100	34523



PINOUT	
1	UL
2	UR
3	SHLD
4	LR
5	LL

REV	CHANGE NOTICE	DATE	DRW
05	REVISE PER CO 032175	10/10	SB
04	REVISE PER CO 031906	7/10	SB
03	REVISE PER CO 030452	6/09	SB

- NOTES:
- WEIGHT OF GLASS IN GRAMS: 1196±10%
 - 5 PIN AMP CONNECTOR LATCH STYLE HOUSING P/N: 487526-4
TIN CONTACTS P/N: 2-487406-4
HOUSING ORIENTED WITH LATCH DOWN

UNITS	INCHES [MM]	 3M TOUCH SYSTEMS METHUEN, MA USA <small>© COPYRIGHT 2004 THIS DOCUMENT IS COPYRIGHTED PROPERTY OF THE 3M COMPANY AND MAY NOT BE REPRODUCED WITHOUT 3M WRITTEN PERMISSION OR USED OR DISCLOSED FOR OTHER THAN 3M AUTHORIZED PURPOSES.</small>
TOLERANCES UNLESS OTHERWISE SPECIFIED	.X ± .XX ±.03 [.76] .XXX ±.015 [.38] ANGLES ±1°	
THIRD ANGLE PROJECTION		DRAWN AH 4/07 DO NOT SCALE DRAWING SCALE 1 = 1

TITLE		MARKETING DRAWING SCT32NN 22.37" W	
SIZE	DOCUMENT NO.	SHEET	REV
C	34079-MKT	1 OF 1	05